



CKFR NEWSLADDER

CENTRAL KITSAP FIRE AND RESCUE

ABOVE: Some shots from the Rope Drill at the Bremerton Training Center!



Fire Chief's Message on the EMS Levy

We want to thank everyone who took time to vote on our levy for emergency medical service (EMS) during the August Primary election. The final vote was 69.68% in favor of renewing the EMS levy for another six years.

EMS accounts for 70% of all emergency calls. Revenue from the EMS levy will maintain service levels, but also help us add additional transport units and several pieces of life-saving equipment.

No one likes paying taxes, but many recognize that they fund some critical public services, such as fire and EMS. Are we perfect, no. Do we strive for perfection? Absolutely. I've spent almost 40 years in emergency services and Central Kitsap Fire & Rescue is where I chose to finish my career because of its stellar reputation not only for life-saving programs, but also for financial management.

In the months ahead, we plan to talk more with our community about how we fund emergency services. Your understanding of how levies go up or down, what funding options we have, why new homes don't provide more levy revenue, what it means to ask voters to approve a "lid lift," why reserve funds are important—covering these issues will create a better understanding for the role your tax dollars play in providing this vital public service.

INSIDE THIS ISSUE:



Kitsap County
Commissioner's
Corner: Ed Wolfe &
Chief Oliver **2**

Upcoming Events **2**

Bond Capital Projects
Update - 3rd Qtr. **3-5**

Presentations for our
Newly Promoted **6-7**

Congrats!



We have some exciting news from our Fire Family!

Last month, Firefighter Jen Sargeant gave birth to Savannah. Savannah weighed in at 7lbs 8oz. Congrats to Jenn, Matt, and the whole family (including our own retired staff member, Tammy (Grandma) Sargeant)!

Savannah is already doing crossfit, her favorite WOD is sleeping X15, eating X8, and being cute 24/7,

Fire Chief's Message (cont.)

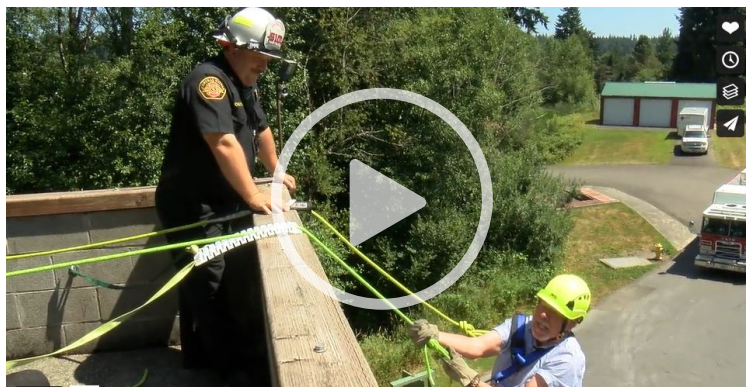
We could not save lives and property without the financial support our taxpayers. I may steer the ship, but our taxpayers own it. And, your investment in this agency has built one of the best emergency service programs in the state.

Thank you in advance for your support of Central Kitsap Fire & Rescue. As always, feel free to contact me with questions as well at joliver@ckfr.org.

Thank you for your support!

**Commissioner's Corner:
Central Kitsap Fire & Rescue**

Kitsap County Commissioner Ed Wolfe (District 3) talks with Chief John Oliver about wildfire season, the EMS levy, and the unique, life-saving services that CKFR provides to the residents of Central Kitsap and beyond!



Upcoming Events

August 25-29
Kitsap County Fair & Stampede

September 6
Labor Day
Admin Office Closed

September 13
Board of Commissioners
Regular Meeting

September 27
Board of Commissioners
Study Session

October (all month)
Breast Cancer Awareness

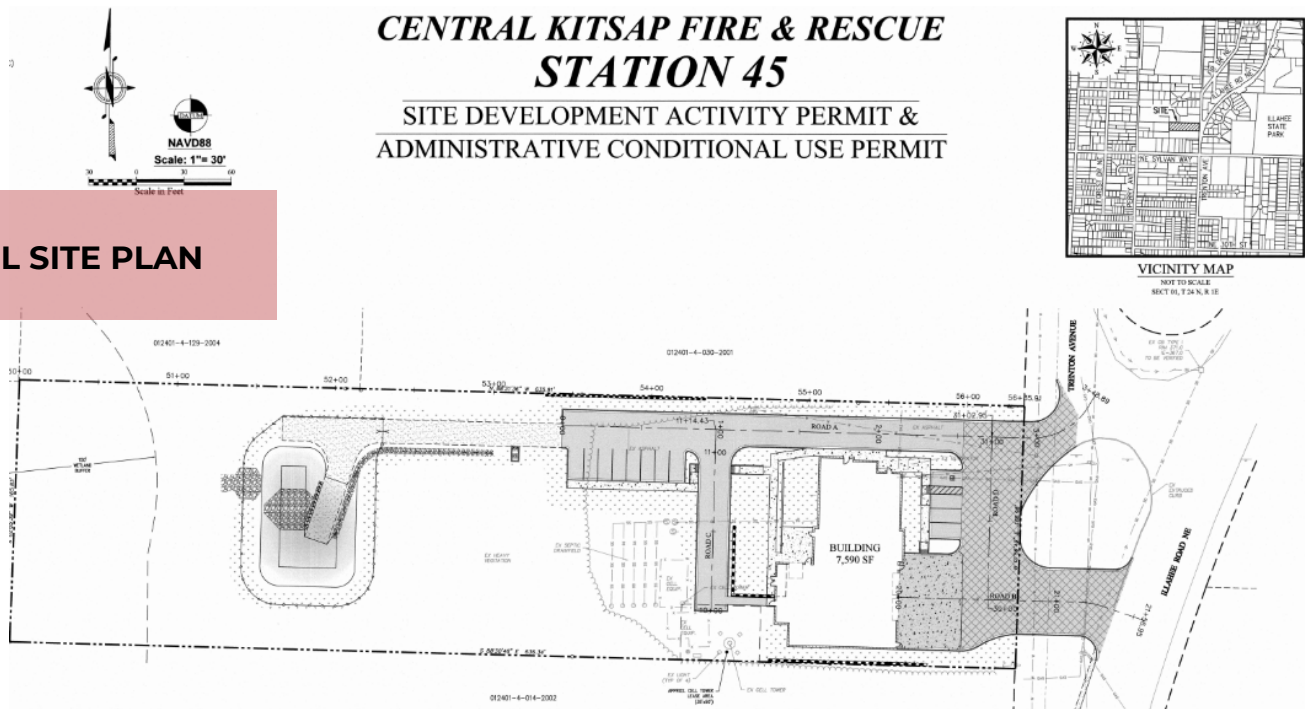




Bond Projects Q3 Update!

Your Capital Projects team is busy working on the three Phase 1 projects concurrently, Station 52, Station 45, and Station 57.

The Station 52 SDAP and ACUP permits have been submitted and we have received initial input and feedback from the County. Our Rice Fergus Miller partners and Consultants are busy addressing all details and we as an owner group, along with Shannon Thompson (Barker Creek Consulting) are also providing feedback to keep things moving forward and on-schedule.



CIVIL SITE PLAN

The Station 45 project has been the main emphasis this past three months. We have had quite a few challenges, specifically due to this property's narrow width and grade. Considering setback requirements, the grade, our septic restrictions, and projected cost escalations, we have had to redesign this project to a two bay, four dorm station. We were able to incorporate the same functional areas as the Sta. 52 design with modifications to accommodate the reduction in building width. I have attached schematics from our Design Development set that show our civil site plan and building elevations. We anticipate this station to accommodate the current and planned future staffing of one crew, with one additional dorm for ride-alongs, etc.

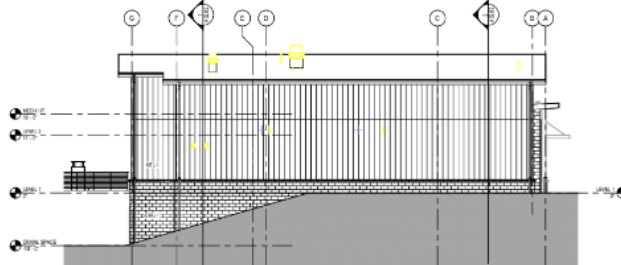
ELEVATIONS



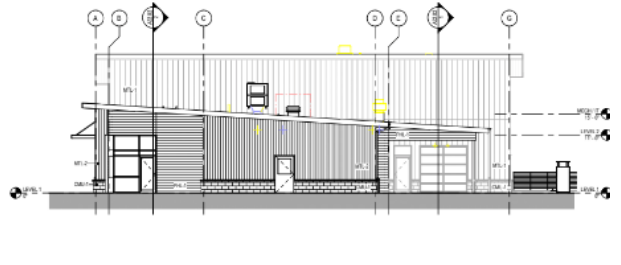
1 BUILDING ELEVATION - EAST

GENERAL NOTES - EXTERIOR ELEVATIONS

1. SEE ARCHITECT'S GENERAL NOTES FOR EXTERIOR LIGHTING AND SIGNAGE SYSTEMS.
 2. CLADDING AND FINISHES OF EXTERIOR WALLS AND CEILING SHALL BE AS NOTED TO CLADDING AND FINISHES TO BE OBTAINED THROUGHOUT TO MATCH WITH CLADDING AND FINISHES OF EXTERIOR WALLS AND CEILING.
 3. EXTERIOR LIGHTING SHALL BE AS NOTED TO CLADDING AND FINISHES TO BE OBTAINED THROUGHOUT TO MATCH WITH CLADDING AND FINISHES OF EXTERIOR WALLS AND CEILING.
 4. EXTERIOR LIGHTING SHALL BE AS NOTED TO CLADDING AND FINISHES TO BE OBTAINED THROUGHOUT TO MATCH WITH CLADDING AND FINISHES OF EXTERIOR WALLS AND CEILING.
- | | | | |
|--|--------------------------|--|---------------------------|
| | MFL-1 BRASS SIGN MARKERS | | MFL-3 BRASS SIGN MARKERS |
| | MFL-2 BRASS SIGN MARKERS | | MFL-4 BRASS SIGN MARKERS |
| | MFL-5 BRASS SIGN MARKERS | | MFL-6 BRASS SIGN MARKERS |
| | MFL-7 BRASS SIGN MARKERS | | MFL-8 BRASS SIGN MARKERS |
| | MFL-9 BRASS SIGN MARKERS | | MFL-10 BRASS SIGN MARKERS |



2 BUILDING ELEVATION - SOUTH

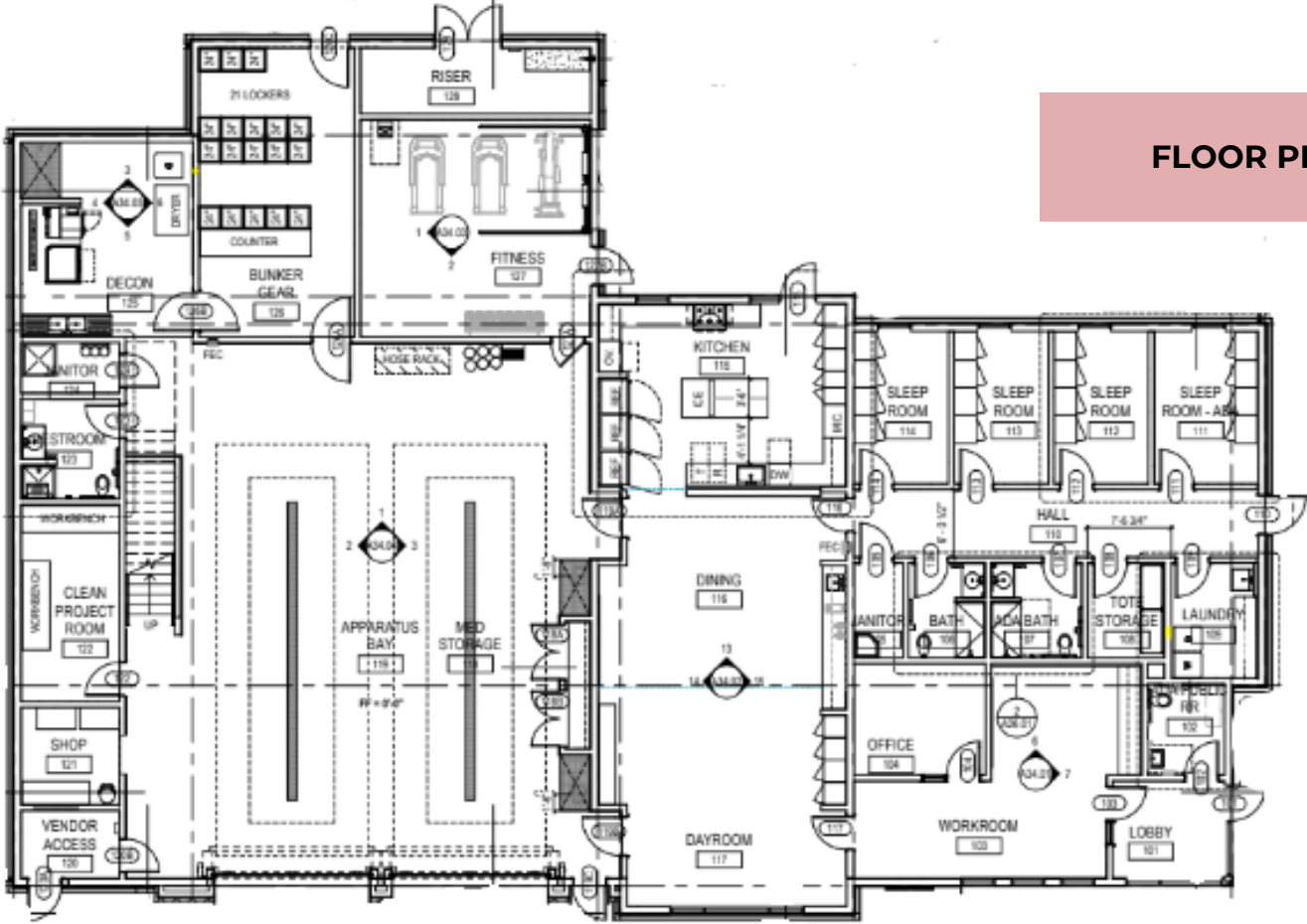


3 BUILDING ELEVATION - NORTH



4 BUILDING ELEVATION - WEST

FLOOR PLAN



Bond Projects (cont.)

We are also working on the Station 57 (Lake Symington) project. Our Civil Engineer Norm Olson, working through Rice Fergus Miller, is currently developing the site plan for this station and we anticipate a design similar to Station 52 at this location.

These are very challenging times for a building project. With low inventory levels in the supply chain, high material costs, labor shortages in all trades, and an extreme demand, our cost estimations are coming in very high. As an example, the escalation factor for the last two projects in Phase 1 (Sta. 57 & 53) was recently increased from 6% to 20%.

Ultimately our construction budget has to stay on track in order to accommodate all projects within this six year program. It is challenging and difficult to make adjustments in order to stay on budget, however it is necessary. Even with these challenges, I am confident we will provide excellent fire stations to our communities(s) as well as more efficient, safer, and healthier living environments for our personnel to work from 24/7.

Thank you,

AC Mike Tague, Capital Projects Manager

BELOW: B-Shift performing driver training with FF Aaron Trumbull earlier this month!



Presentations for our Newly Promoted

*LT Terry Fassett's Helmet Shield on Aug. 11,
and Oath of Office / Badge Pinning on Aug. 16*



Oath of Office / Badge Pinning for AO Jeff Stanley on Aug. 19



Oath of Office / Badge Pinning for CAPT Kara Putnam on Aug. 25



Oath of Office / Badge Pinning for AO Ivan Semerenko on Aug. 26

